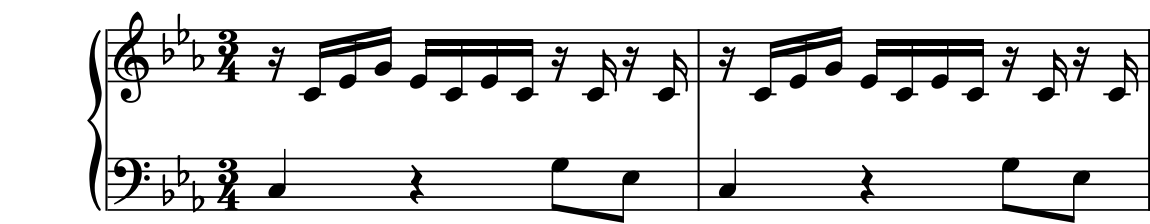


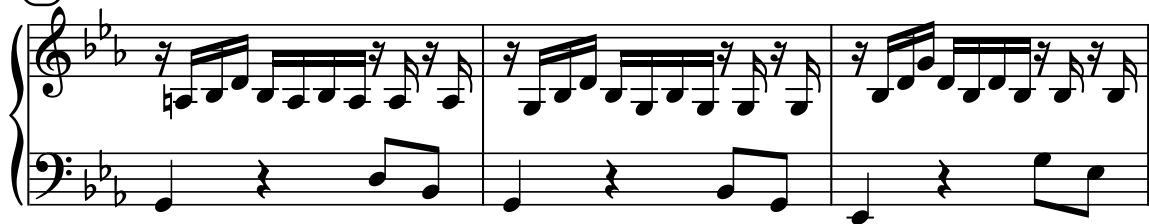
# Preludio in Cm

Bwv 999

J.S.Bach



(13)



(16)



(18)



(21)



(24)



(27)



(29)

Measures 29-30. Treble clef: Measure 29 has a quarter rest followed by an eighth-note triplet (F#4, G4, A4), then eighth notes B4, A4, G4, F#4, E4, D4. Measure 30 has eighth notes D4, C4, B3, A3, G3, F#3. Bass clef: Measure 29 has a quarter note F3, a quarter rest, and an eighth-note triplet (F#3, G3, A3). Measure 30 has a quarter note F3, a quarter rest, and an eighth-note triplet (F#3, G3, A3).

(31)

Measures 31-32. Treble clef: Measure 31 has an eighth-note triplet (F#4, G4, A4), then eighth notes B4, A4, G4, F#4, E4, D4. Measure 32 has eighth notes D4, C4, B3, A3, G3, F#3. Bass clef: Measure 31 has a quarter note F3, a quarter rest, and an eighth-note triplet (F#3, G3, A3). Measure 32 has a quarter note F3, a quarter rest, and an eighth-note triplet (F#3, G3, A3).

(33)

Measures 33-34. Treble clef: Measure 33 has an eighth-note triplet (F#4, G4, A4), then eighth notes B4, A4, G4, F#4, E4, D4. Measure 34 has eighth notes D4, C4, B3, A3, G3, F#3. Bass clef: Measure 33 has a quarter note F3, a quarter rest, and an eighth-note triplet (F#3, G3, A3). Measure 34 has a quarter note F3, a quarter rest, and an eighth-note triplet (F#3, G3, A3).

(35)

Measures 35-37. Treble clef: Measure 35 has an eighth-note triplet (F#4, G4, A4), then eighth notes B4, A4, G4, F#4, E4, D4. Measure 36 has eighth notes D4, C4, B3, A3, G3, F#3. Measure 37 has eighth notes F#3, G3, A3, B3, C4, D4. Bass clef: Measure 35 has a quarter note F3, a quarter rest, and an eighth-note triplet (F#3, G3, A3). Measure 36 has a quarter note F3, a quarter rest, and an eighth-note triplet (F#3, G3, A3). Measure 37 has a quarter note F3, a quarter rest, and an eighth-note triplet (F#3, G3, A3).

(38)

Measures 38-40. Treble clef: Measure 38 has an eighth-note triplet (F#4, G4, A4), then eighth notes B4, A4, G4, F#4, E4, D4. Measure 39 has eighth notes D4, C4, B3, A3, G3, F#3. Measure 40 has eighth notes F#3, G3, A3, B3, C4, D4. Bass clef: Measure 38 has a quarter note F3, a quarter rest, and an eighth-note triplet (F#3, G3, A3). Measure 39 has a quarter note F3, a quarter rest, and an eighth-note triplet (F#3, G3, A3). Measure 40 has a quarter note F3, a quarter rest, and an eighth-note triplet (F#3, G3, A3).

(41)

Measures 41-43. Treble clef: Measure 41 has an eighth-note triplet (F#4, G4, A4), then eighth notes B4, A4, G4, F#4, E4, D4. Measure 42 has eighth notes D4, C4, B3, A3, G3, F#3. Measure 43 has a whole note chord (F#3, G3, A3, B3, C4, D4). Bass clef: Measure 41 has a quarter note F3, a quarter rest, and an eighth-note triplet (F#3, G3, A3). Measure 42 has a quarter note F3, a quarter rest, and an eighth-note triplet (F#3, G3, A3). Measure 43 has a whole note chord (F#3, G3, A3, B3, C4, D4).